

## GERMANIUM DIODE

Germanium diode in all glass construction for use in video detector circuits.

**RATINGS** (Limiting values according to the Absolute Maximum System as defined in IEC publication 134).

Voltages

Continuous reverse voltage	$V_R$	max.	15 V
Repetitive peak reverse voltage	$V_{RRM}$	max.	22.5 V

Currents

Forward current (d.c.)	$I_F$	max.	50 mA
Repetitive peak forward current	$I_{FRM}$	max.	150 mA
Non repetitive peak forward current ( $t \leq 1$ s)	$I_{FSM}$	max.	400 mA

Temperature

Operating ambient temperature	$T_{amb}$	-50 to +75 °C
-------------------------------	-----------	---------------

**CHARACTERISTICS**  $T_{amb} = 25$  °C

<u>Forward voltage</u> at $I_F = 0.1$ mA	$V_F$	0.1 to 0.25 V
--	-------	---------------

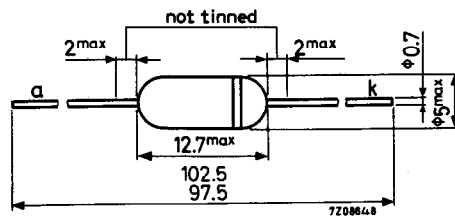
<u>Reverse current</u> at $V_R = 1.5$ V	$I_R$	1 to 30 $\mu$ A
---	-------	-----------------

<u>Diode capacitance</u>	$C_d$	typ. 1 pF
--------------------------	-------	-----------

**MECHANICAL DATA**

Dimensions in mm

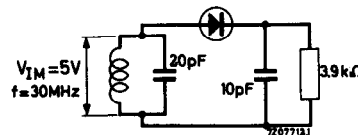
Net weight: 0.6 g



**APPLICATION INFORMATION**

Diode in video detector circuit

Efficiency:  $\eta = 62\%$   
Damping resistance: 3 k $\Omega$



-----  
FOR NEW DESIGN THE SUCCESSOR TYPE OA90 IS RECOMMENDED  
-----

